

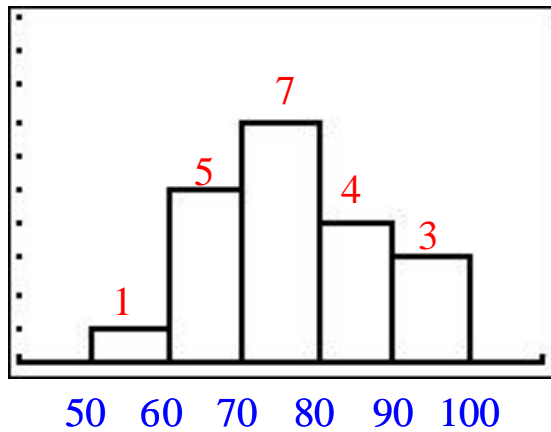
GRADES-2 ANSWERS

For each of the following sets of grades, do the following:

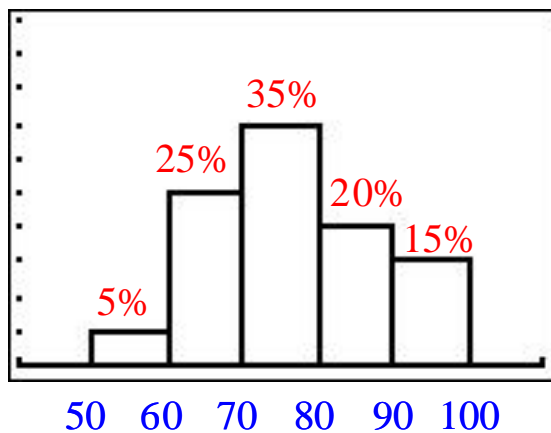
- Construct a histogram beginning with a lower class limit of 50 and using classes of width 10. Label the horizontal axis with the lower class limits, and write the frequency above each bar.
- Construct a relative frequency histogram beginning with a lower class limit of 50 and using classes of width 10. Label the horizontal axis with the lower class limits, and write the percentage above each bar.
- Construct a line graph for each set of grades by, for each class, plotting the class midpoint and the class frequency and connecting the dots. Label on the graph the coordinates of each point you plot.

1. 55, 62, 63, 66, 67, 69, 71, 71, 73, 74, 75, 78, 79, 85, 87, 88, 89, 92, 92, 99

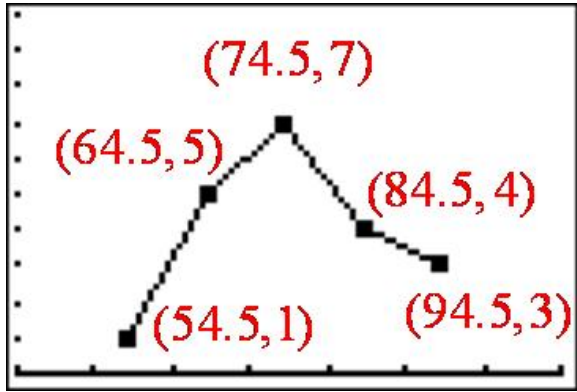
a.



b.

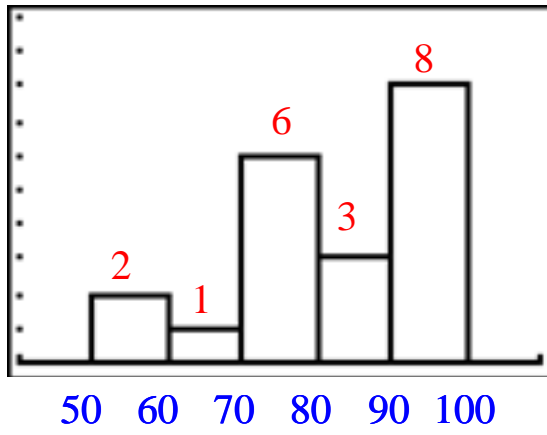


c.

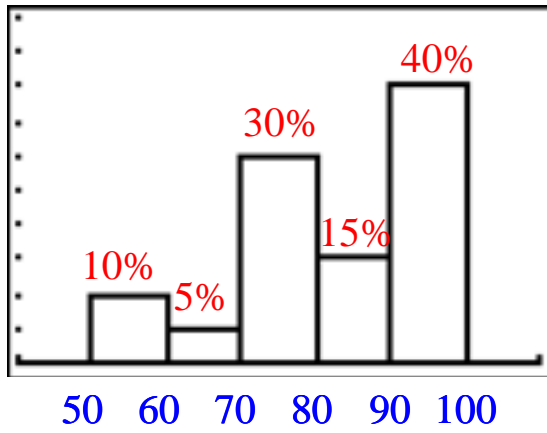


2. 54, 56, 63, 72, 73, 75, 76, 77, 78, 81, 81, 89, 91, 92, 95, 95, 95, 96, 97, 98

a.



b.



c.

