

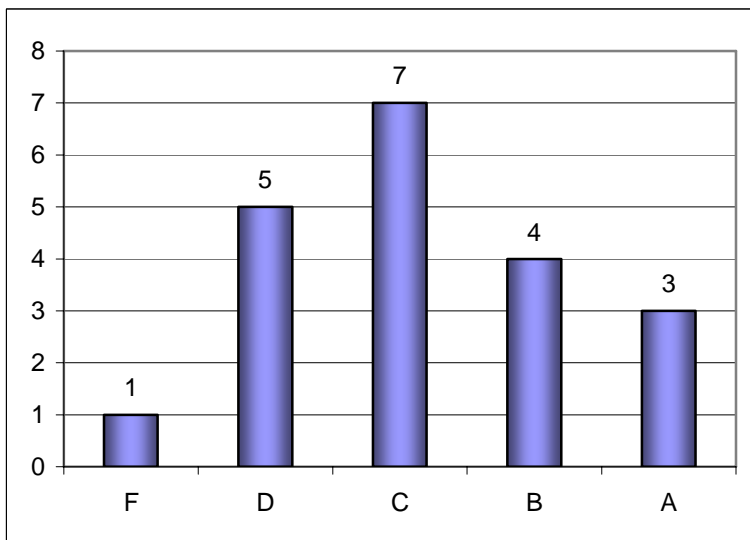
GRADES-3 ANSWERS

For each of the following sets of grades, do the following:

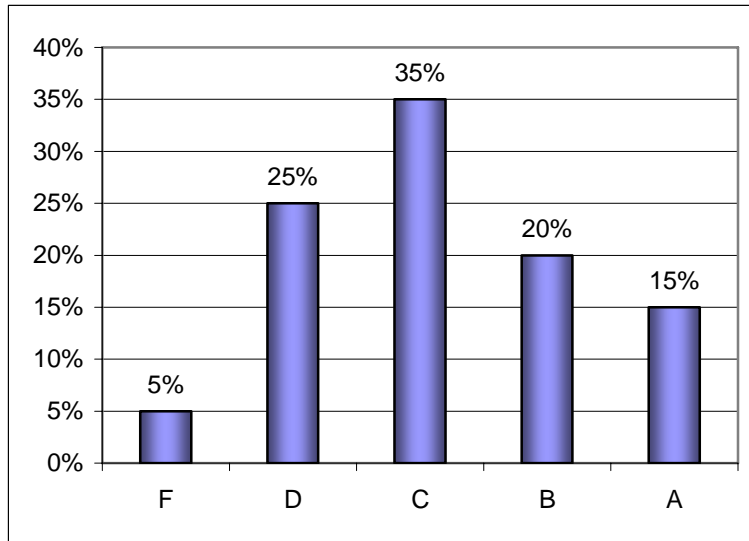
- a. Convert each numerical grade to a letter grade (F, D, C, B, or A), and construct a bar graph for the grades. Label each bar with the grade and the frequency, and put the bars in order from F to A.
- b. Convert each numerical grade to a letter grade (F, D, C, B, or A), and construct a relative frequency bar graph for the grades. Label each bar with the grade and the percentage, and put the bars in order from F to A.
- c. Convert your relative frequency bar graph to a Pareto chart. Label each bar with the grade and the percentage.
- d. Construct a pie chart for the grades, and label each slice with the grade and the percentage.

1. 55, 62, 63, 66, 67, 69, 71, 71, 73, 74, 75, 78, 79, 85, 87, 88, 89, 92, 92, 99

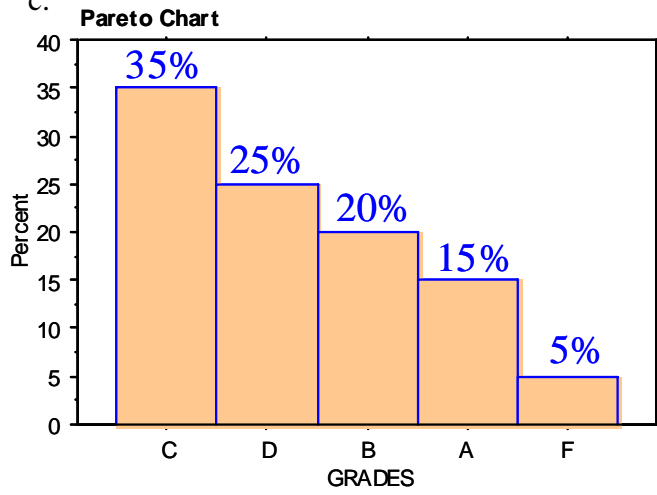
a.



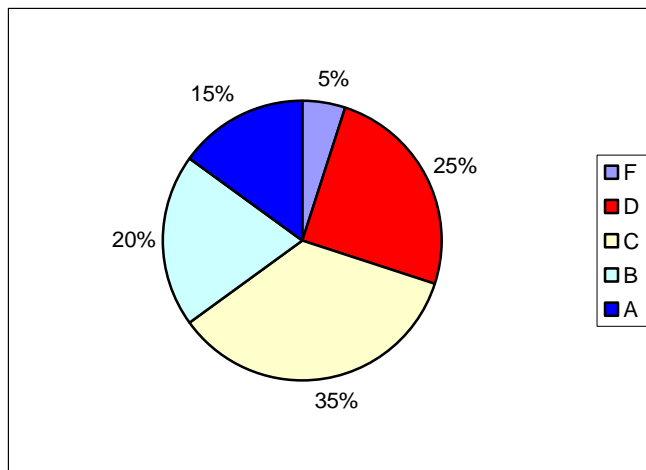
b.



c.

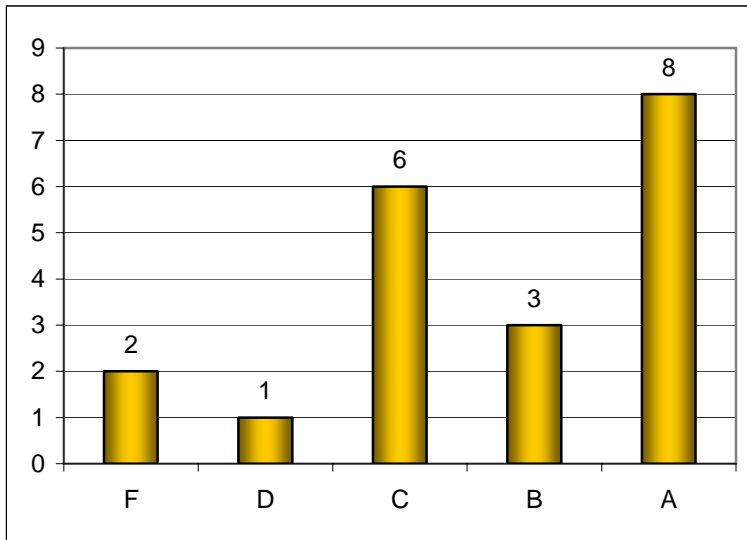


d.

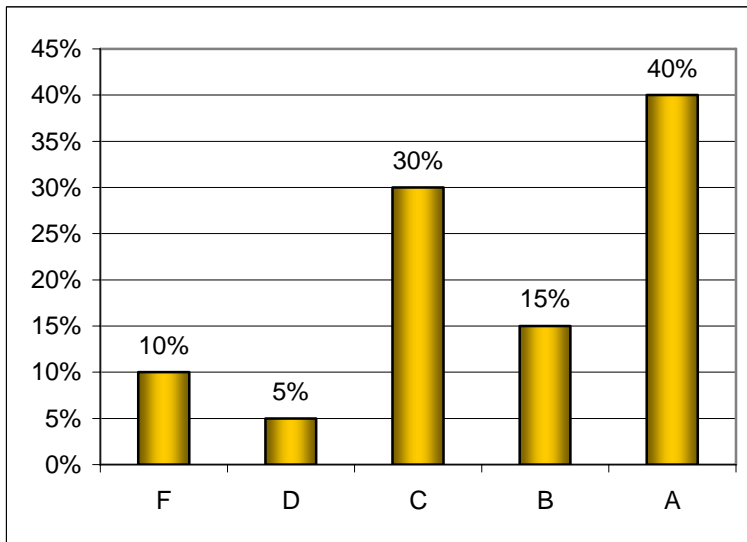


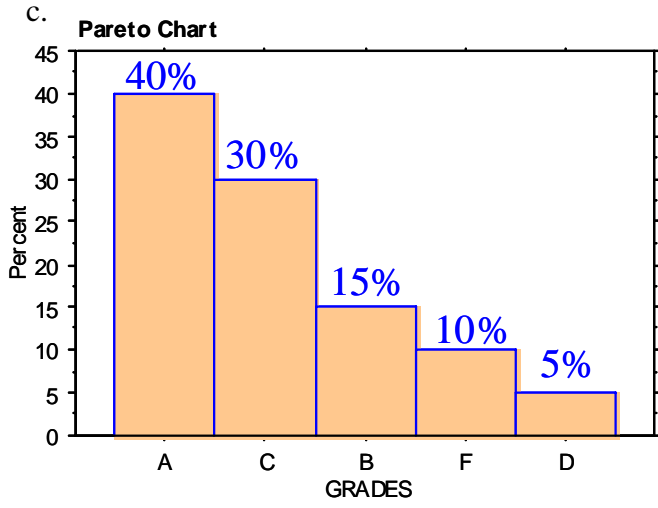
2. 54, 56, 63, 72, 73, 75, 76, 77, 78, 81, 81, 89, 91, 92, 95, 95, 95, 96, 97, 98

a.



b.





d.

